

No : 04R / 2020  
Date : 20 AUGUST 2020  
Rescission Date : NA



# AIRPORT EMERGENCY SERVICE

---

## FIRE PREVENTION CIRCULAR

---

To All Airport Staff and Fire Safety Managers

### LUNAR SEVEN MONTH PRAYERS - FIRE SAFETY PRECAUTIONS

The Lunar 7<sup>th</sup> Month for 2020 is from 19 August to 16 September 2020.

2 We wish to remind all staff performing prayers during the Lunar 7<sup>th</sup> Month to adhere to the following fire safety precautions:

- a. Burning of offerings are strictly prohibited inside buildings and airside;
- b. Burning of offerings at landside is permitted ONLY from 19 August to 16 September 2020 at designated burning site (refer to Annex A & B1 – B4 for details);
- c. Burning of offerings shall be contained within CAG approved burning bins; and
- d. Two numbers of portable dry powder fire extinguishers of a minimum rating of 21A shall be available at the burning sites (refer to Annex C on how to use an extinguisher)
- e. NO vehicle shall be parked in close proximity to the bins.

3 Do note that due to proximity with CAFHI fuel tank, the designated burning site for Cargo Agent D (CAB D) will be combined with Cargo Agent Building E (CAB E) – refer to Annex B - 3.

4 For ad-hoc request on stand-alone burning site, please contact AES for site assessment.

5 For further clarifications, you may contact the Fire Prevention (FP) of the Airport Emergency Service at 6541 2535 or e-mail to: [nazri.kamarudin@changiairport.com](mailto:nazri.kamarudin@changiairport.com)

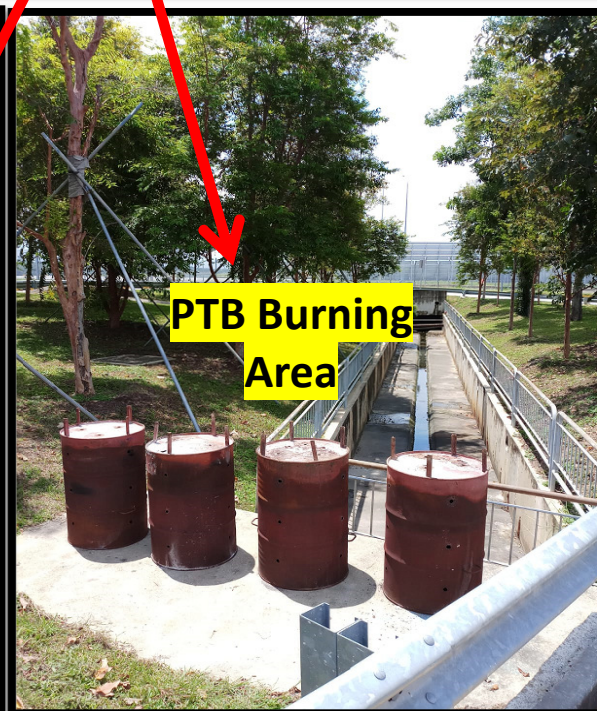
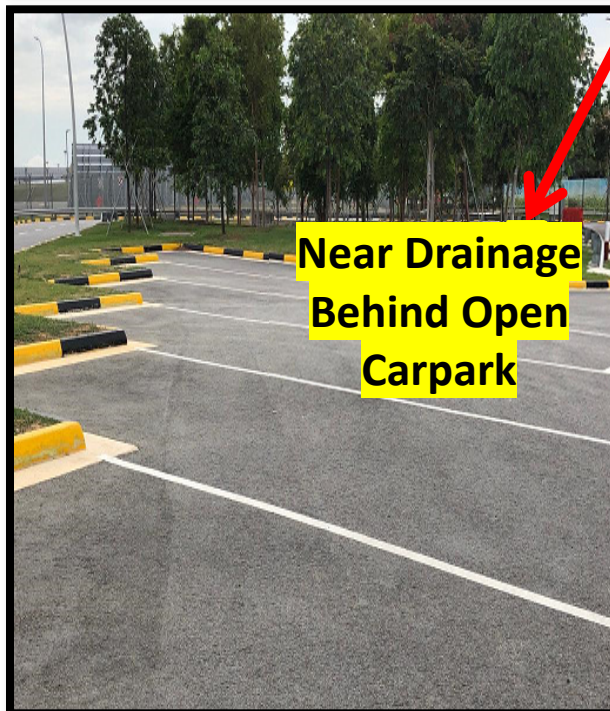
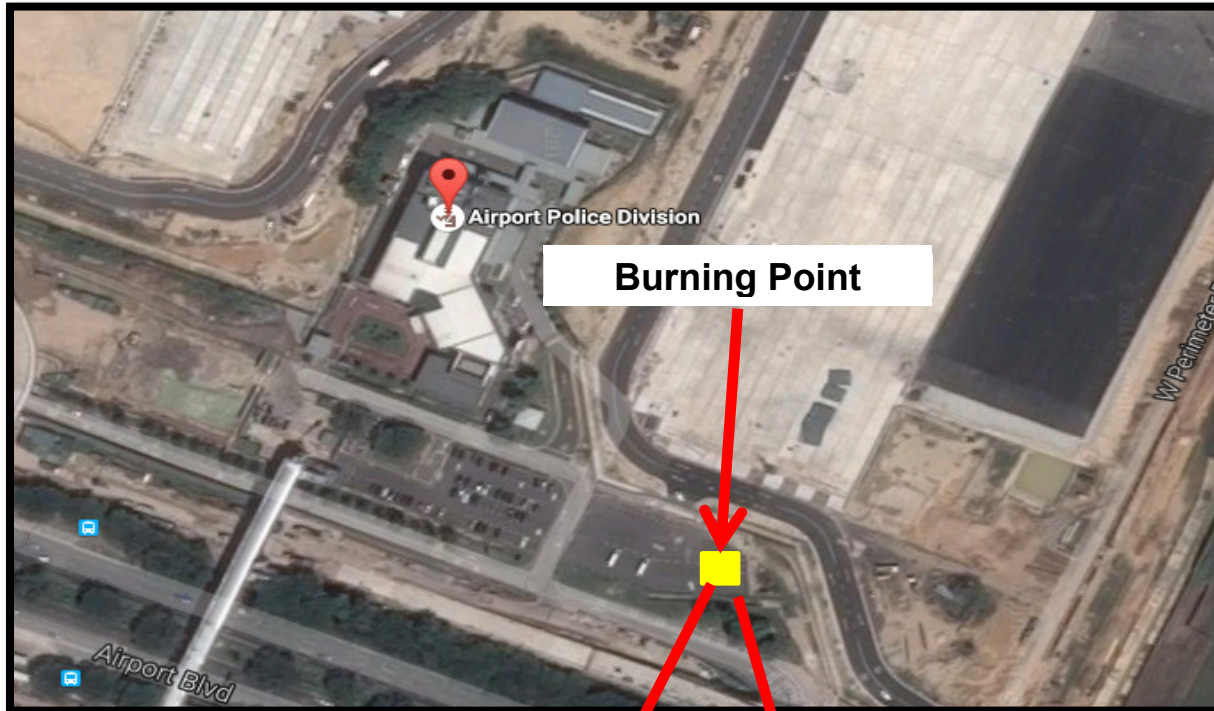
A handwritten signature in black ink, appearing to be "Addison Low".

ADDISON LOW  
Head, Fire Prevention Section  
Airport Emergency Service

Annex A

**Designated Lunar Seventh Month Festival Praying Location for Passenger Terminal Building**

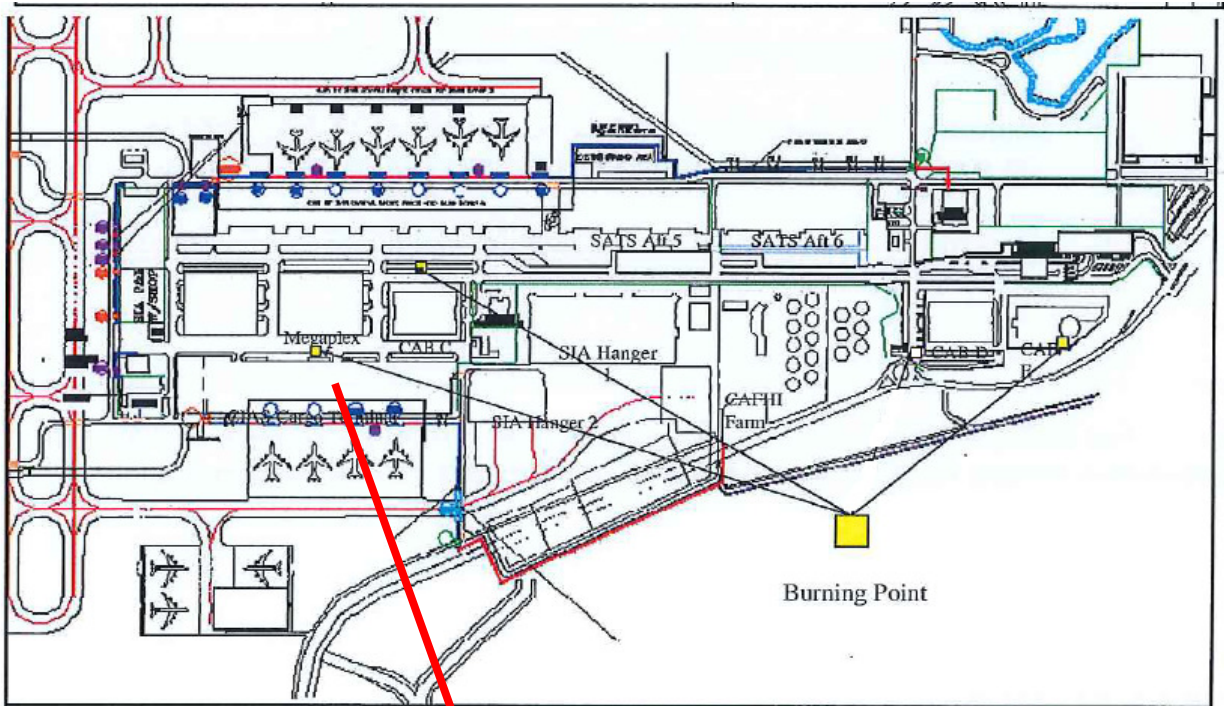
**Airport Police Division (APD) – Near Drainage behind Open Carpark**



**Annex B - 1**

**Designated Lunar Seventh Month Festival Praying Location for Changi Airfreight Centre (CAC)**

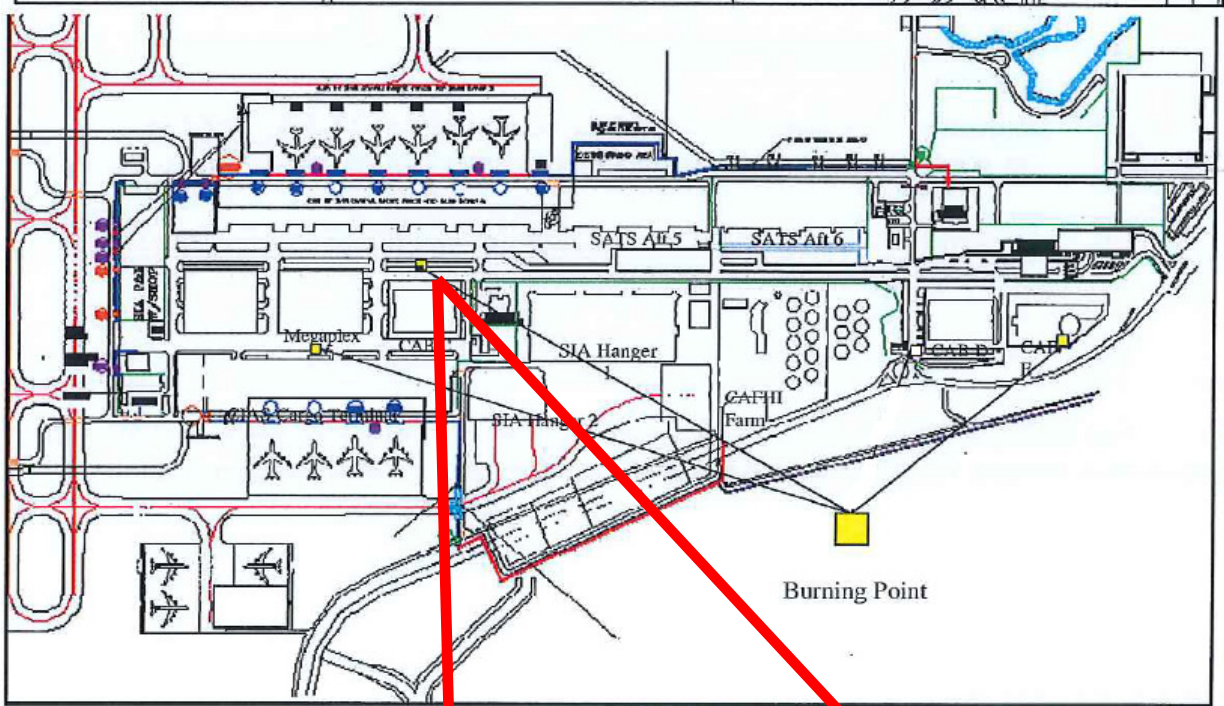
**Megaplex - (Pavement along DNATA Bus-Stop)**



**Annex B - 2**

**Designated Lunar Seventh Month Festival Praying Location for Changi Airfreight Centre (CAC)**

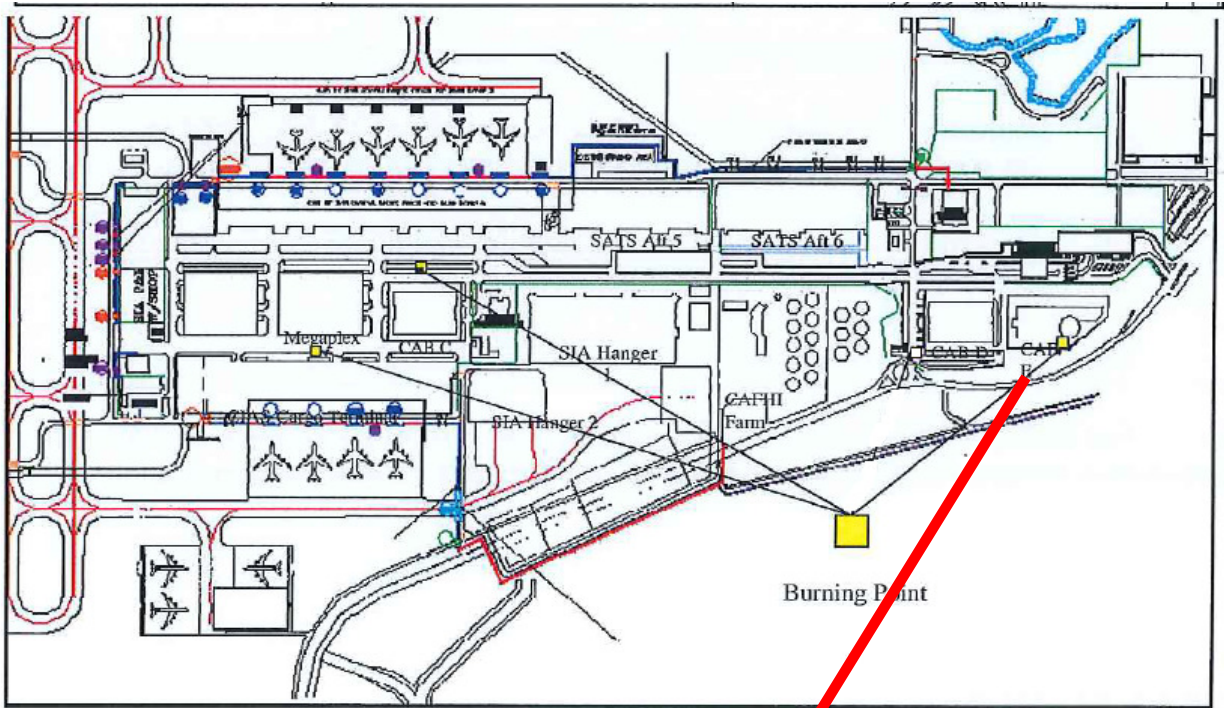
**Cargo Agent Building C – Pavement along main road towards Cargo Agent C**



**Annex B - 3**

**Designated Lunar Seventh Month Festival Praying Location for Changi Airfreight Centre (CAC)**

**Cargo Agent Building D & E – Pavement front of Open Carpark Area at Cargo Agent E**



Annex C

How to operate a portable fire extinguisher – P.A.S.S Method

